

BODYWORKS: MY EYES

LEARNING OBJECTIVE

I can identify and describe the function of different parts of the human eye.

LEARNING EXPERIENCES

I have explored the structure and function of sensory organs to develop my understanding of body actions in response to outside conditions

SCN 2-12b.

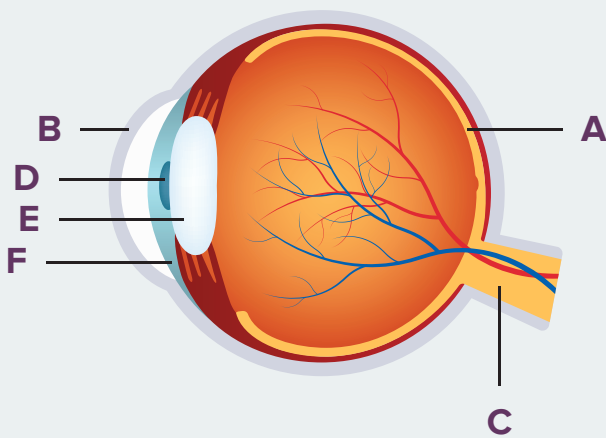
KEEP IN TOUCH

0141 420 5003 | glasgowsciencecentre.org



BODYWORKS: MY EYES

MATCH THE LETTERS ON THE DIAGRAM BELOW WITH THE BOXES NEXT TO THE CORRECT DESCRIPTIONS



- Iris** – I’m the coloured part of your eye. Tiny muscles inside me control how much light can enter your eye through the hole in the centre.
- Cornea** – I’m a transparent coating which covers the iris and the pupil at the front of your eye. I work with the lens to change the direction of light to help your eye focus.
- Pupil** – I’m the hole in the centre of your eye that allows light to enter. My size is changed by the iris.
- Lens** – I focus light onto the retina at the back of your eye
- Optic Nerve** – I send signals representing light, colour and dark to your brain. Where I leave your retina, there are no sensory receptors. This means you have a blind spot at the back of your eye!
- Retina** – I contain sensors that convert light to electrical impulses that are sent along the optic nerve to the brain. These sensors are called photoreceptors and there are two types, Rods and Cones.

KEEP IN TOUCH

0141 420 5003 | glasgowsciencecentre.org

